

Products



Plastic Line



Stainless Steel Line



Hygienic Line



Tekno-Clean Line



Stainless Steel Accessories

Overview

Plastic adjustable feet, plastic leveling feet, conveyor, screws, studs, bolts, spindle: the line includes leveling components with fiber glass reinforced polyamide and the option for -30° freeze-proof polyamide, UV rays & ESD (MOQ required).

These stainless steel leveling feet and stainless steel adjustable feet, are particularly indicated to all industries where no rust is allowed and hygienic regulations have to be respected.

Accessories in respect of the strictest hygienic regulations: Tekno-Hygienic & 3-A (or 3A) Line is a very specific product for high demanding environment concerned with hygiene, food and dairy industry among all. Other applications can be found within the chemical, pharmaceutical and cosmetics industry.

The Tekno-Clean line, used in most food applications, offers a sanitized profile, i.e. without exposed thread. It differs from its brother 3A branded for being a simpler and more accessible product, suitable for most applications.

These machine components and standard elements such as knobs, handles, hinges and latches are available in stainless steel only. They complete FATH's offer for the food industry, but not only that. They are in fact an important product when designing machineries, where stainless steel is the only option.

Application

Applications are: automation, conveyor systems, packaging, work-desk, aluminum structures a.s.o.

Applications: pharmaceutical, chemical, enological, dairy and food processing industry in general.

Supports, leveling components & accessories, designed to comply with the strictest hygiene standards. FATH is the only one to offer ¼ turn latches with 3-A certificate RPSCQC # 29 and IP69K

This line also includes Tekno-Tank, specific for tanks with huge loads.

Supports and leveling components, machine supports and leveling feet designed to comply with hygiene standards.

In this range: industrial technical products and stainless steel components such as knobs, bow handles & ¼ turn latches IP67 & IP69K accepted.

[Click here to Visit FATH Martin Leveling Feet's website](#)

Represented by

HANDY TECH GROUP, INC.®



Products



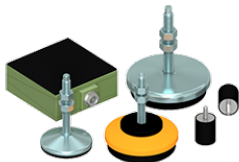
Steel Line



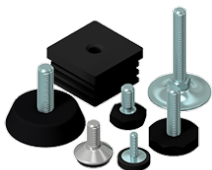
Tekno-Fix Line



Pressed Line



Antivibration Line



Mini Line

Overview

Adjustable feet and steel levelling feet: this line offers components in steel with different coatings: from painted to galvanized steel or burnished to phosphated steel.

Application

Applications: palletizers, machine tool, ceramic, automation, robots and heavy industry in general.

Tekno-Fix and Tekn-Fix CNC are a series of specific products studied for Machine Tools and Robots alike.

Applications: CNC, automotive, conveyors, lathe, robots, etc

Its technical features such as thin pitch thread and the bolt-down option makes it the ideal solution to use in conjunction with these applications.

These levelling feet are available in galvanized and stainless steel. Because of their nature, they are a good compromise between a plastic and a solid foot. The version with vulcanized rubber allows its use in the food industry too.

Applications: food, ceramic industry and handling-logistic machineries in general.

Anti-vibration solutions, leveling feet, anti-vibration components: this line is particularly indicated to solve vibration problems. According to which sector you want to use them, you can choose the right solution among plastic, steel or stainless steel components.

Applications: injection presses, machine tools, glides, typographic machines, vibrators, compressors a.s.o.

These adjustable feet and rubber feet are ideal products for light applications and big volumes.

Furniture industry like offices or interiors, so-called white industry such as household electric appliances, electrical cabinets and light scaffolds are the most common applications for these miniature feet.

[Click here to Visit FATH Martin Leveling Feet's website](#)

Represented by

HANDY TECH GROUP, INC.®

