

**Products****Quarter Turn Locks****Overview**

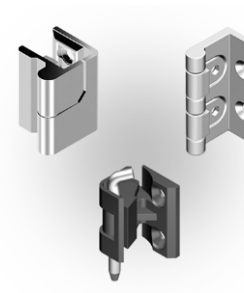
Quarter Turns can be used in a variety of applications. An example is securing a door to an enclosure. Quarter Turns consist of a housing, an actuating insert and a cam.

**Products****Surface Hinges****Overview**

External surface mounted hinges. Versions include screw mount, stud mount, weld on, metal, plastic, clamping, lift off, detent and friction.

**Compression Latches**

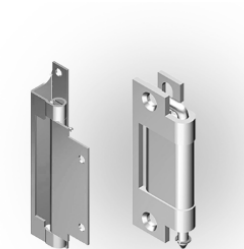
Compression latches are utilized in various applications, such as securing a door to an enclosure. These latches consist of a housing, an actuating insert, and a cam that travels in the axial direction, providing increased clamping force for improved gasket compression.

**Semi-Concealed Hinges**

Completely conceals hardware for an attractive and secure enclosure. Versions include screw mount, metal and lift off.

**Slam Latches**

Slam Latches are used in a variety of applications. An example is securing a door or panel to an enclosure. Slam Latches consist of a housing, an optional keyed insert and a slam bolt.

**Concealed Hinges**

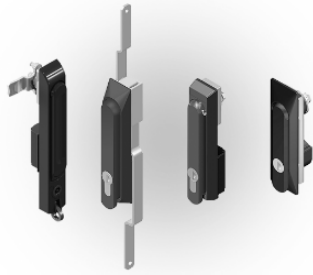
Completely conceals hardware and hinge for an attractive and secure enclosure. Versions include screw mount, metal and lift off.

[Click here to Visit FATH Industrial Hardware's website](#)

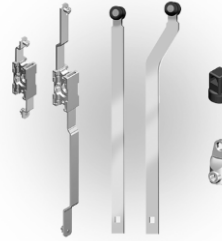
Represented by

HANDY TECH GROUP, INC.®



**Swing Handles**

Swing Handles are used in a variety of applications. An example is securing a large door to an enclosure. Swing Handles consist of an escutcheon, handle and an optional keyed insert. These handles can work with round or rectangular door rods for multi-point latching

**Accessories for Swing Handles**

Providing a wide range of round and rectangular rods, rod guides, rod controls, DIN cylinder locks and adapters for swing handles.

**Handles**

Ideal for enclosures and electrical cabinets. Handle types include pocket pulls, U shaped, folding, adjustable width, etc. Material types include PA 30, 304 SS, mild steel and aluminum.

**Cover Stays**

Ideal for enclosures and electrical cabinets. Used to support horizontally hinged doors of covers and to hold vertically hinged doors open.

**Accessories**

Complete line of accessories for our 1/4 turns, swing handles and additional items. Includes multiple types of cams, spare hardware, adapters, roller cams, monitor arms, keys, etc.

**Gaskets**

Ideal for enclosures and electrical cabinets. We offer gaskets made of PVC, EPDM, Neoprene, and NBR. Several of our gasket profiles have been UL recognized for 50E type enclosures.

[Click here to Visit FATH Industrial Hardware's website](#)

Represented by

HANDY TECH GROUP, INC.®

