

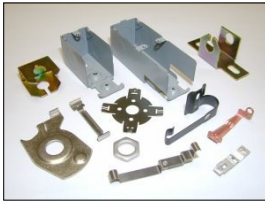


Rowley Spring and Stamping Corp.

POWERPRESS STAMPINGS

PRODUCTION TYPES

Progressive Die Stamping



Progressive Metal Stamping



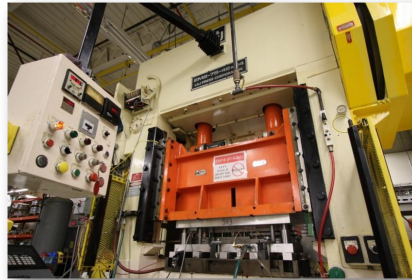
Secondary



CAPABILITIES & EQUIPMENT

Power Press:

- 28 Power Press machines.
- Range from 22 - 150 ton.
- OBI and straight side pressed.
- In house tool design.



Secondary:

- Tapping.
- Forming.
- Assemblies.
- Welding.
- High and low volume production.



ROWLEY SPRING AND STAMPING CORP.

210 Redstone Hill Rd.
Bristol, CT 06010

Office Hours:
8:00am-5:00pm EST
Monday - Friday

Phone: (860)582-8175

Fax: (860)589-8718

www.rowleyspring.com



"Satisfying customers
since 1954"

Materials:	Stainless Steels, Carbon Steels, Brass, Copper, Nickel and Many More.
Size:	.003" to .187" flat stock up to 16" wide. Press bed capacity up to 60".