

Products



Etched Nameplates



Anodized Nameplates



Embossed Nameplates



Printed Nameplates



Custom Formed Nameplates

Overview

Chemical etching is the most durable form of decorating offered at Metallics. The etching process creates a variation in surface levels creating a permanent graphic solution even in the harshest environments. Metallics manufactures both etched copy and etched background.

Their complete in-house anodizing capabilities allow us to offer their customers a stronger and more protected product. The process oxidizes the aluminum making your product a durable one.

Embossing is one way to make your nameplate stand out among the rest. Whether it be aluminum or brass, embossing adds dimension and impact to any nameplate design.

Screen-printing allows us to match your colors exactly to produce a flawless product with a crisp, clean appearance.

Metallics has a full machine shop including their own tool and die department. This allows them to provide custom forms and stampings

Features include

Features include:

- Offered with or without color
- Durability
- Visual Appeal

Features include:

- Color Embedded (won't wear or fade)
- Durability
- Chemical Resistance
- Visual Appeal

Features of embossed nameplates include:

- Visual Appeal
- Tactile Appeal
- Durability

Features of screen-printing include:

- Fade Resistance
- Durability
- Precision (color-matching)
- Visual Appeal

Features include:

- Visual Appeal
- Durability

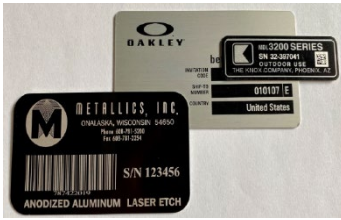
[Click Here to Visit Metallics website](#)

Represented by

HANDY TECH GROUP, INC.™



Products



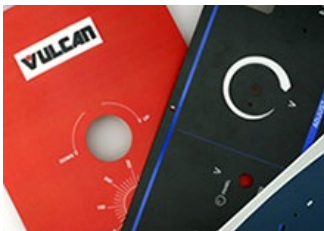
Laser Marking



Safety Markings



Printed Decal and Overlays



Panel Overlay



Domed Decal



Roll Labels

Overview

Laser Marking is a durable, clean, and cost-effective way to mark variable data. This method can be used for marking an entire data plate with the info provided to Metallics in a spreadsheet.

Safety Markings can be printed on several different substrates. Metallics has a full line of ANSI symbols and colors

Multi-color process printing not only provides exceptional print quality, but it also offers their customers the ability to purchase a multi-colored decal for the same price as a single colored decal.

Different variations of panel overlays are created every day at Metallics. From vinyl and backlit to polyester and embossed, they can produce the exact overlay to fit your needs.

Doming is a great way to add dimension and distinctiveness to any flexible decal. This long-lasting resilient decal will surely stand out among all others.

Roll labels are available in numerous shapes and sizes. Consecutive numbering, bar coding, and multi-color printing capabilities set our roll labels apart from all the rest

Features include

Features include:

- Visual Appeal
- Cost Effective

Features include:

- Clear, easy visual communication
- Communicate and post safety notices
- Exceptional Print Quality

Features include:

- Exceptional Quality Print Definition
- Visual Appeal
- Cost Effective
- Unlimited Colors Available
- Digitally or screen printed

Features of these include:

- Fits to panel specifications
- Heat & Fade Resistant
- Durability
- Visual Appeal

*Selective adhesive is also available.

Some features of doming include:

- Visual Appeal
- Tactile Appeal
- Resilience
- Dimension

Features of roll labels include:

- Visual Appeal
- Convenience
- Easy Application
- High Adhesive Strength

[Click Here to Visit Metallics website](#)

Represented by

HANDY TECH GROUP, INC.™

