



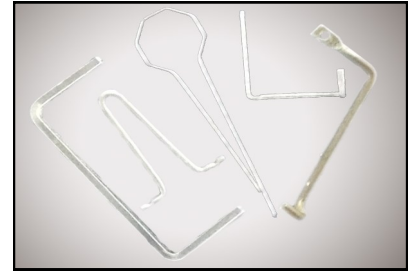
Rowley Spring and Stamping Corp.

FOURSLIDE

PRODUCTION TYPES



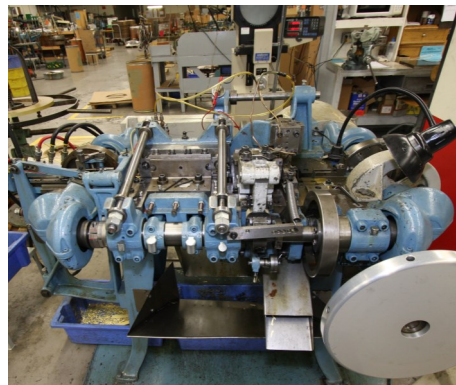
**Stampings
&
Wireforms**



CAPABILITIES & EQUIPMENT

Fourslide:

- 50 Nielson Machines.
Range #00 - #326.
- 1 US Baird Machine.
- Metal stampings, Wire forms, and complex forms with multiple bends.
- Bowl fed components can be assembled into final product.



****Fourslide stamping process saves on material cost by ordering material true to part.**

ROWLEY SPRING AND STAMPING CORP.

210 Redstone Hill Rd.
Bristol, CT 06010

Office Hours:
8:00am-5:00pm EST
Monday - Friday

Phone: (860)582-8175
Fax: (860)589-8718

www.rowleyspring.com



"Satisfying customers
since 1954"

Materials:	Stainless Steels, Carbon Steels, Brass, Copper, Nickel and Many More.
Size:	.001" to .060" thick, up to 2.0" wide. Wireforms run .005"-.187".