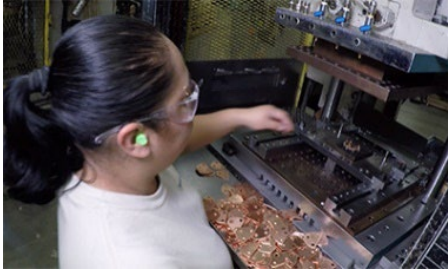


Dynamic Stampings capabilities include:



Short Run Metal Stamping

- At Dynamic, building short run tooling is an art that combines traditional craftsmanship with the assistance of modern machines and methods, CAD-CAM, CNC machining centers and wire EDM.
- Standard tolerances for production are ± 0.005 in. on linear dimensions and ± 0.0015 in. on hole diameters. They work in any material which can be cold stamped.
- Most short run stamping jobs we run are in the thickness range of 0.010 in. to 0.250 in. Press capacity to 150 tons and maximum die capacity of 16 in. x 22 in.



High Quality Lifetime Tooling

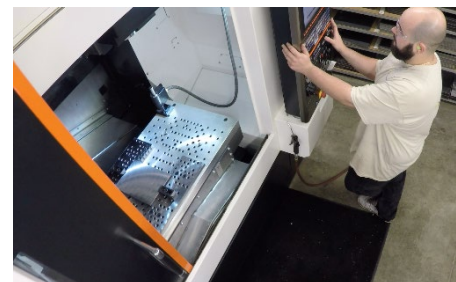
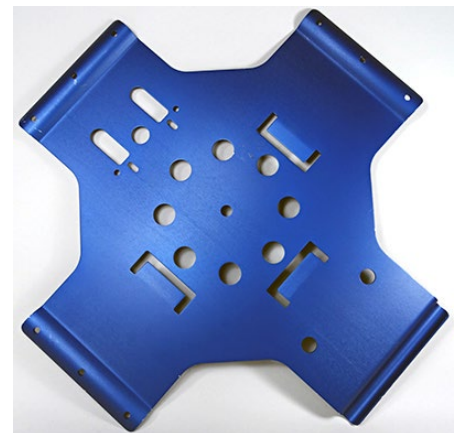
- Short run stamping starts with the high-quality lifetime tooling.
- They use high precision EDM machines to hold .002" tolerances on all of our tool and die sets.
- They produce clean, burr free parts. In fact, 80% of their stamped parts do not require deburring.



Secondary Operations for Metal Stampings

Secondary services include but not limited to:

- Time Saving Sanding
- PEM Insertion
- Vertical Machining
- Powder Coat Paint
- Liquid Paint
- Various Plating
- Anodizing
- Heat Treating
- E-Coat
- Welding
- Copper Brazing



[Click Here to Visit Dynamic Stampings website](#)

Represented by

HANDY TECH GROUP, INC.®